



D 11 Probitex

Compression Proof and Form Stable Biaxial expanded gasket tape with adhesive backing

Characteristics

- No change in width at compression
- Excellent on slim or restricted flange area
- No ageing of the ePTFE Joint Sealant
- Excellent adaption to flange unevenness
- Physiologically safe in temperatures up to +500 °F
- Practically no waste producing

Operating range

p_{\max} [psi]	Vacuum . . . 2900
t °F	-330 . . . +540
pH	0 - 14

Pressure: Vacuum up to 580 psi
(according to the operational and/or
assembly conditions)
Temperature: Resistance of the ePTFE
sealing material short term +590 °F. After
temperature exceeds 248 °F for the first
time the bolts should be Re-tightened.

Main application

- Larger flanges and vessels
- Glaslined flanges
- Agitators
- Heat exchangers

Suitable for

- Chemical industry
- Pharmaceutical industry
- Food industry
- General service

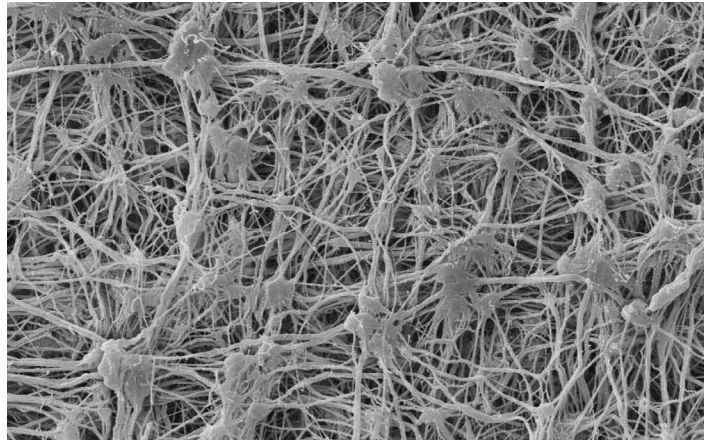
Approvals

- FDA21 CFR 177.1550 (PTFE),
FDA21 CFR 170.105 (adhesive)
EG 1935:2004 EU 10/2011
- TA Luft VDI 2440

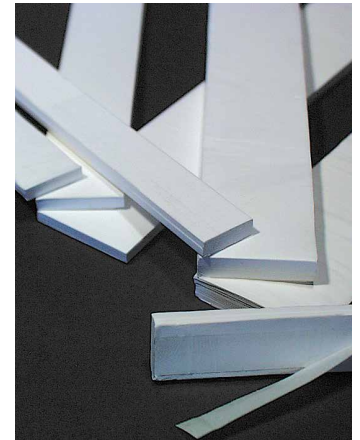


Form of delivery

- 32 ft / roll
- Other length and dimension on
request



Microscopic view: 100 % pure PTFE (VDE-VDI 2480) in a monoaxial expanded Net-Knot structure.



All technical information and advice is based on our experience and will be given most conscientiously but without any liability.
Indication and figures are for guidance only and need to be examined by the user. All sizes are subject to manufacturing tolerances. We reserve the right to modify specifications at any time.
Please note that the technical values cannot be used all at the same time in their maximum values.

ProPack AG

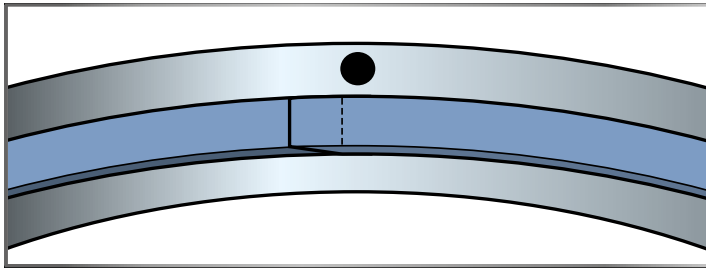
Rudolf-Diesel-Ring 28 . 82054 Sauerlach . Germany

Phone ++49 (0) 8104 6640 0 . Fax ++49 (0) 8104 6640 44
propack@propack.ag

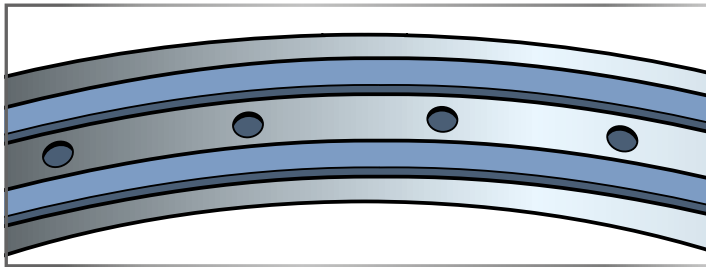
www.propack.ag
TECHNOLOGY MADE IN GERMANY

Installation Instructions

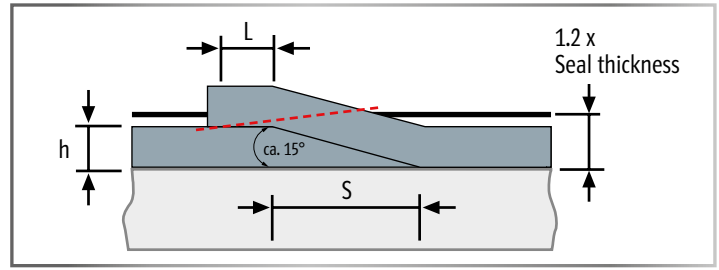
NOTICE GLASLINED FLANGES: For glasslined flanges gasket width is selected equal or slightly wider than sealing area.
Up to NW 800 gasket thickness is 0.28" and above NW 800 a gasket thickness of 0.35" is recommended.



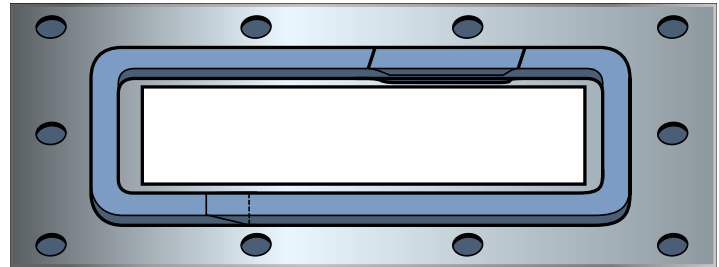
1. Clean flange surfaces
2. Remove cover from adhesive side
3. Fix sealing on seal surface
4. Shaft and overlap ends in front of bolts
5. Cutting - Conducting a skive cut (see figure right side)



Fitting a supporting outside the bolt circle prevents the flanges from tilting.
When selecting the width under consideration of the screw forces, do not exceed the maximum permissible surface pressure of 150 MPa.



The ends must always be connected by an skive cut.
skive cut section (S) = 2 x sealing width,
skive cut overlap length (L) approx. 2-3 x seal thickness (h).



Unevenness should not exceed 1/3 of the seal thickness. Bedding or double layer in case of larger unevenness and flange distortion or local damage on the flange.

Form of delivery

thickness (mm) / (inch)	Recommended for Steel Flanges width according EN1514-1 (NW)	Surface pressure / resulting thickness in (inch)			
		1450 lbf/in ²	2900 lbf/in ²	4350 lbf/in ²	5800 lbf/in ²
2 / 0.08"	≤ 300	0.037	0.030	0.028	0.026
3 / 0.12"	≤ 800	0.062	0.045	0.041	0.039
4 / 0.16"	≤ 800	0.074	0.060	0.055	0.052
5 / 0.20"	≤ 800	0.093	0.075	0.069	0.065
6 / 0.24"	≤ 1500	0.111	0.090	0.083	0.078
7 / 0.28"	≤ 1500	0.130	0.105	0.096	0.091
8 / 0.32"	≤ 1500	0.148	0.120	0.110	0.104
9 / 0.35"	≤ 1500	0.167	0.135	0.124	0.117
10 / 0.40"	> 1500	0.185	0.150	0.138	0.130

Standard dimensions D11 Probitex: (other sizes available on request)

width	thickness (inch)								
	0.08"	0.12"	0.16"	0.20"	0.24"	0.28"	0.32"	0.35"	0.40"
3/8"	x	x	x	x	x	x	x	x	x
5/8"	x	x	x	x	x	x	x	x	x
3/4"	x	x	x	x	x	x	x	x	x
1"	x	x	x	x	x	x	x	x	x
1 1/4"	x	x	x	x	x	x	x	x	x
1 3/8"	x	x	x	x	x	x	x	x	x
1 1/2"	x	x	x	x	x	x	x	x	x
1 3/4"	x	x	x	x	x	x	x	x	x
2"		x		x	x	x	x	x	x
2 1/4"		x			x	x	x	x	x
2 1/2"		x			x	x	x	x	x

All technical information and advice is based on our experience and will be given most conscientiously but without any liability.

Indication and figures are for guidance only and need to be examined by the user. All sizes are subject to manufacturing tolerances. We reserve the right to modify specifications at any time.

Please note that the technical values cannot be used all at the same time in their maximum values.

ProPack AG

Rudolf-Diesel-Ring 28 · 82054 Sauerlach · Germany

Phone ++49 (0) 8104 6640 0 · Fax ++49 (0) 8104 6640 44

propack@propack.ag

www.propack.ag

TECHNOLOGY MADE IN GERMANY