



## MANHOLE SEAL D 4.3 (oval)

Formstable and pressure resistant biaxially expanded ePTFE gasket

### Characteristics

- No change of width during compression
- Non ageing, unlimited storability
- Very good adaption to an unevenness of a flange
- Physiologically non hazardous up to 260 °C
- Chemically inert
- Well suited for alternating temperatures
- High sealability
- Non hardening, non sticking to seal surface
- Seals also suitable for cold water pressure test

### Operating range

t °C	-200 ... +250
p [bar]	max 40
pH	0 - 14

### Main application

- Hand, Head- and Manhole opening on steam boilers
- Tank Manholes in round and oval shapes

### Suitable for

- Safety Gasket for Steam Boilers and Vessels
- Pharmaceutical Industry
- Food Industry

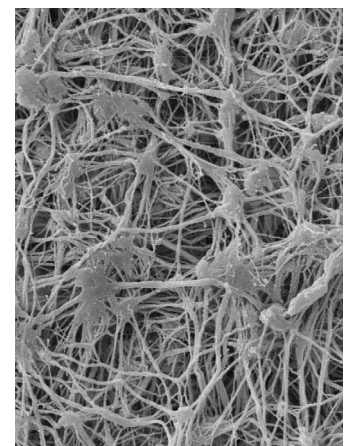
### Approvals

- FDA conform
- Food Approval EC 1935:2004 in accordance with EU10/2011



### Form of delivery

Standard dimensions (mm)	
inner diameter	oval dimensions x seal width x height
80 x 110 x 15 x 6	200 x 300 x 25 x 6
80 x 120 x 15 x 6	220 x 320 x 25 x 6
90 x 120 x 15 x 6	280 x 380 x 25 x 6
100 x 150 x 15 x 6	295 x 395 x 25 x 6
110 x 150 x 15 x 6	300 x 400 x 25 x 6
120 x 150 x 15 x 6	310 x 410 x 25 x 6
120 x 160 x 15 x 6	320 x 420 x 25 x 6
115 x 165 x 15 x 6	325 x 425 x 25 x 6
150 x 200 x 15 x 6	350 x 450 x 25 x 6



Microscopic view

ProPack AG © 2023 | EN-03 | MANHOLE SEAL D 4.3 (oval)

All technical information and advice is based on our experience and will be given most conscientiously but without any liability.

Indication and figures are for guidance only and need to be examined by the user. All sizes are subject to manufacturing tolerances. We reserve the right to modify specifications at any time.

Please note that the technical values cannot be used all at the same time in their maximum values.





## Installation instructions

### Preparation

- The sealing surfaces must fit together also without a gasket.
- The lid must fit to the vessel (see graph).
- Cleaning of both sealing surfaces.
- Choose the right gasket fitting tight around the lid (see picture).
- Gasket has to rest properly on the sealing surface.
- Do not use any separating agents for installation.
- Before installation threads of closure bolts and nuts as well as washers of closing system have to be greased.
- Handle the gasket carefully, not to damage it!

### Installation of the lid

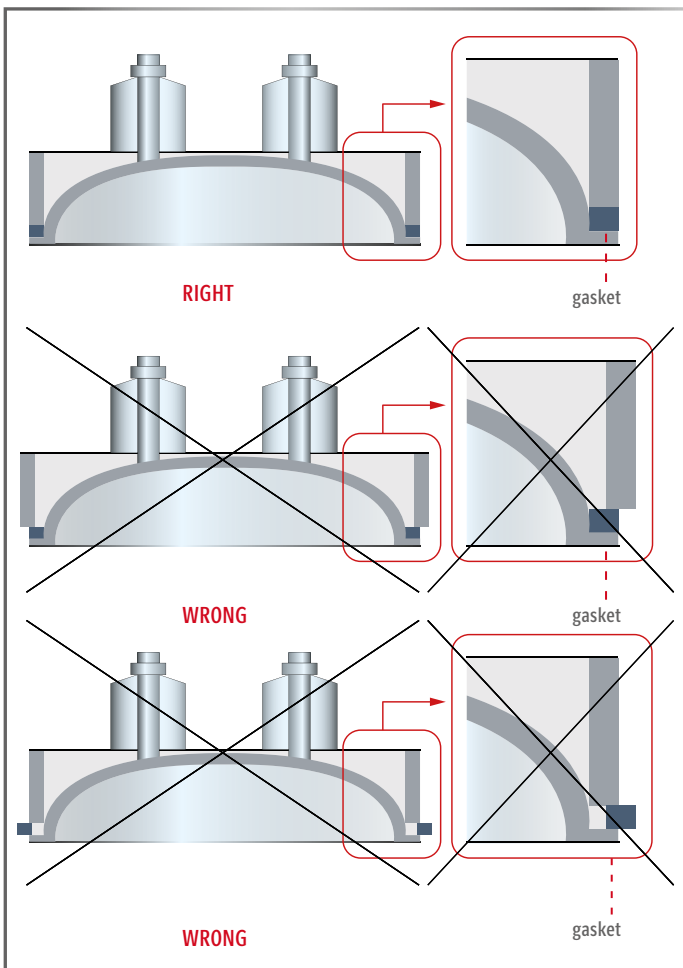
- Insert the lid into the vessel and keep it centered.
- Take care that the gasket is properly aligned.
- Fit the clamping bracket and secure it with Bolts/Nuts.
- Tighten the screws according the instructions of the vessel producer with a torque wrench.
- **Warning**, clamping bracket must not be damaged or bended.
- Check clamping bracket to proper fit.

### Start up of the vessel

- When heating up the vessel, the screws have to be retightened at least every 30 minutes with a torque wrench.
- 30 minutes after reaching the operating temperature of the vessel retighten the screws with a torque wrench.
- After the first temperature cycle retighten the screws with a torque wrench.

### General

- After every opening of the manhole a new seal must be installed.



All technical information and advice is based on our experience and will be given most conscientiously but without any liability.

Indication and figures are for guidance only and need to be examined by the user. All sizes are subject to manufacturing tolerances. We reserve the right to modify specifications at any time.

Please note that the technical values cannot be used all at the same time in their maximum values.