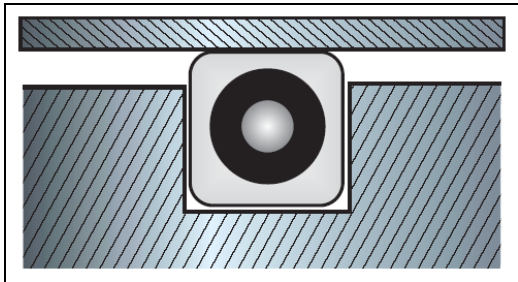


Patented flexible Tubecorepacking for equipment with radial shaft run out and tank lid sealing

The over braided elastomeric tube core gives the packing flexibility and resilience in dynamic and static applications.

The main applications are found in Mixers, agitators, autoklavs, filters, refiners, kneaders and driers.

As static seal the use of this packing is found in door and tank lid sealing.



Graph shows Tubecorepacking in tank lid sealing application

Characteristic for this packing type is the high cross-sectional density and its structural stability. The packing is nevertheless elastic and pliable. This is of importance at bigger radial shaft movement.

3 Styles are offered as standard:

P 5 SKE „Flexible“ is made of PTFE-Fibre with incorporated mechanical reinforcement and additional PTFE-Impregnation, run in lubricant and an elastic EPR Tube core. The particular property of this style is its mechanical strength.



Picture shows P5 SKE

A19 SKV and S 6 SKV „Flexchem“ are made of pure PTFE-Fibre and PTFE Dispersion(A19), and run in lubricant(S6) and an elastic Viton Tube core. The particular property of this type is its high chemical resistance.

A19 SKV is used in static Applications as door and tank lid seals.



Picture S6 SKV

Other materials as surrounding braid or elastomeric core are available on request..
Packing with elastic tube core are a Patent of ProPack Dichtungen und Packungen GmbH

Visit us at www.propack.ag
Copyright © ProPack AG 2009